

ROGER PRADIER

CAPSULE BY WILMOTTE





## JEAN-MICHEL WILMOTTE

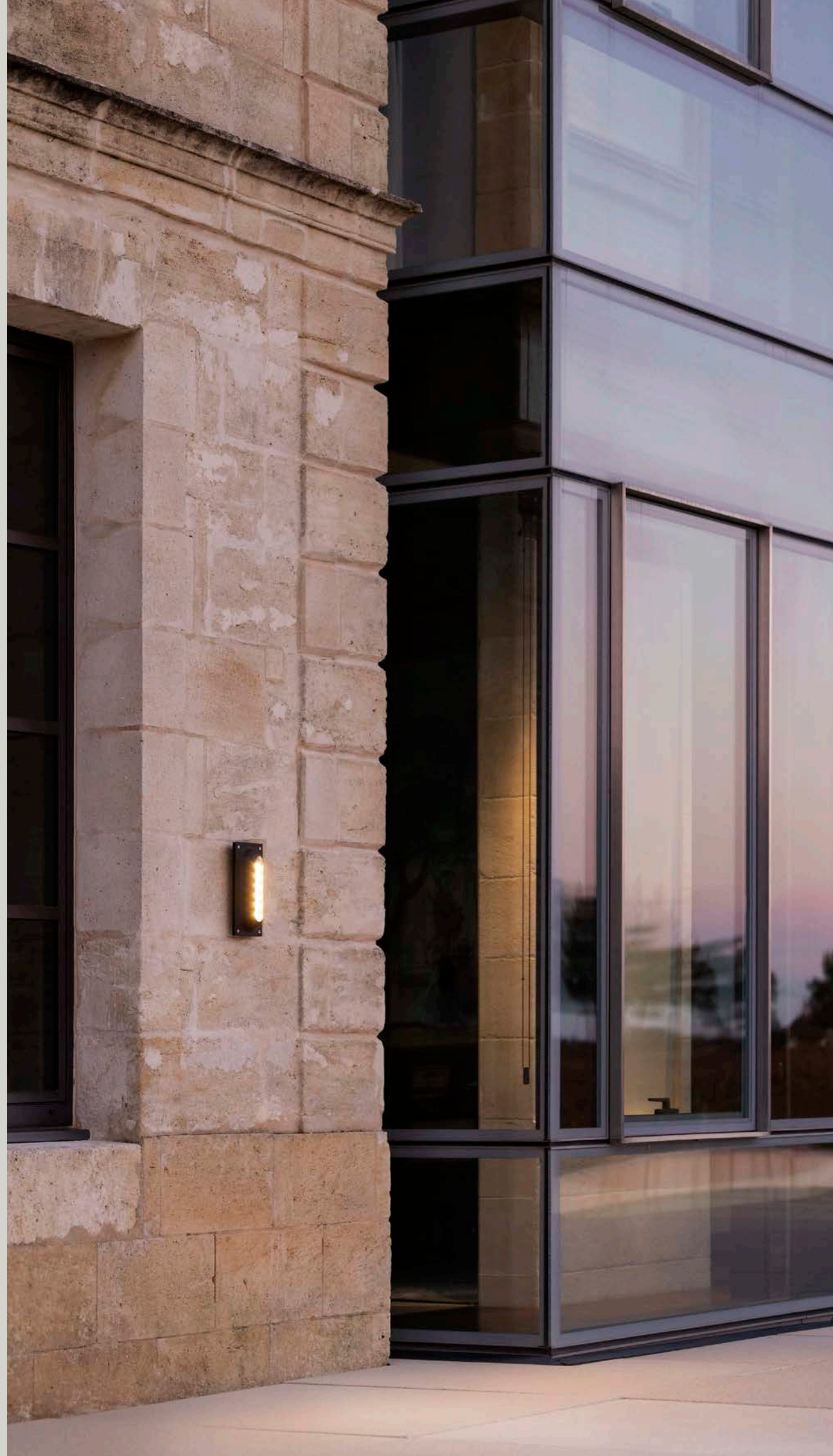
French architect, urban planner, and designer, Jean-Michel Wilmotte is internationally acclaimed for the clarity and elegance of his design language.

## **CAPSULE** BY WILMOTTE

The design of this collection is driven by the ambition to create luminous objects through a single material gesture.

A simple sheet of aluminum, stamped and precision-machined, forms a housing that cradles and encapsulates a curved injection-molded PMMA diffuser.

From the contrast between the rigor of metal and the soft, generous curvature of the diffuser emerges CAPSULE's strong identity - and its name.





Every detail reflects a demanding design approach, from the selection of sustainable materials to the development of high-performance LED optics. The result is a discreet, responsible presence, perfectly tailored to outdoor environments.

**CAPSULE** is crafted from recycled and recyclable aluminum, while its diffuser is made from 100% recycled and recyclable material.

Protected by the diffuser, asymmetric lenses precisely direct light toward the ground. Black anti-glare louvers block any upward light spill, while the black internal circuit eliminates unwanted reflections. Together, these elements deliver exceptional visual comfort, minimize glare, and actively reduce light pollution.

**CAPSULE** luminaires are available in 2700K and 2200K - color temperatures especially suited to parks and gardens, helping respect the natural rhythms of flora and fauna.



The collection is offered in shades drawn from Jean-Michel Wilmotte's signature palette: deep black, aluminum grey, steel blue, old rustic, and sandstone.

With its understated elegance, **CAPSULE** blends seamlessly into a wide range of contexts - contemporary or heritage architecture, terraces, walkways, pathways, parks, and gardens.

Wall fixtures bring rhythm to facades, while bollards guide circulation and reveal landscape contours, creating outdoor lighting that is both functional and expressive, yet always respectful of its surroundings. Here, light becomes a unifying thread - connecting architecture, life, and landscape.

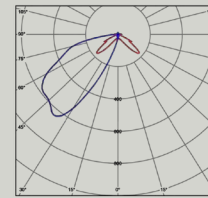


DESIGNED & MANUFACTURED IN FRANCE  
WARRANTY  
**25** YEARS  
ALUMINIUM  
ANTI-CORROSION  
ROGER PRADIER • CHATEAUX ROUX



## CAPSULE BY WILMOTTE

Aluminum  
 Clear PMMA diffuser  
 IP65 - Class 2  
 LED 3W - 2200K CRI : 91.7 TM30 : 92 Flux : 224 lumens  
 LED 3W - 2700K CRI : 94.7 TM30 : 92.6 Flux : 287 lumens



PRM Average Illuminance 20 lux - Model 2 (2700K)

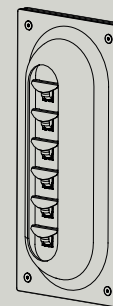
LED 3W	Pathway	Spacing	Emin/Emoy
H 0,57 m	Width 1,50 m	3,00 m	0,23

PRM Average Illuminance 20 lux - Model 2 (2700K)

LED 3W	Pathway	Spacing	Emin/Emoy
H 0,57 m	Width 1,50 m	6,50 m	0,001

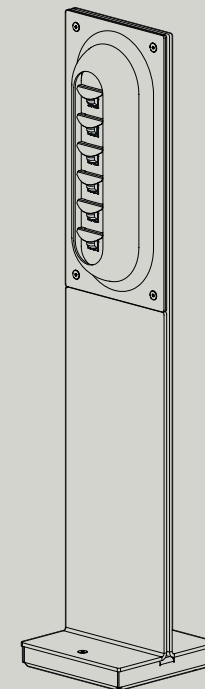
H310 . W150 . D 69 mm

1



H 723 . W150 mm . D 150 mm

2



REFERENCES Replace ... with the colour code

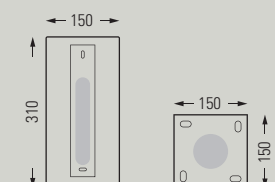
MODELS	DIFFUSERS	LED 3W 2200K warm white	LED 3W 2200K warm white Dali Dimmable	LED 3W 2700K warm white	LED 3W 2700K warm white Dali Dimmable
1	CLEAR	195 001 ...	195 003 ...	195 002 ...	195 004 ...
2	CLEAR	195 009 ...	195 011 ...	195 010 ...	195 012 ...

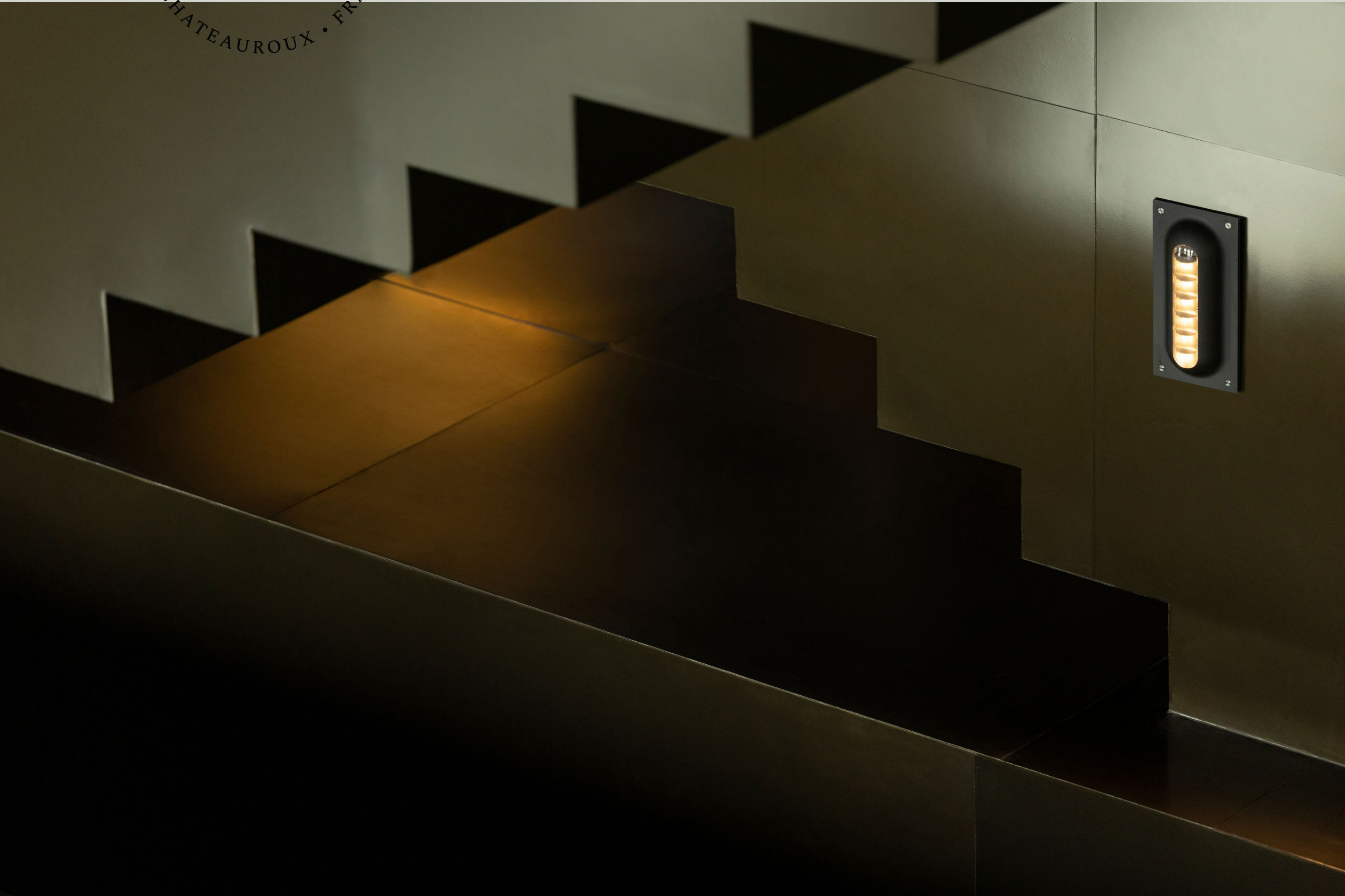
### COLOUR CODES

Replace ... with le colour code

	RAL 5011 STEEL BLUE	065
	SANDSTONE	054
	RAL 9005 JET BLACK	000
	ALUMINUM GREY	148
	OLD RUSTIC	046

### MOUNTING







Acknowledgements  
Studio de design W&I

Photo Credits  
Arnaud Childéric - Kalice Photographies

Photos taken at Château Pédesclaux, Pauillac - France

Graphic Design and Production  
Roger Pradier®



Design & made  
in France

**ROGER PRADIER**

*Factory - Headquarter*  
46 avenue d'Occitanie  
36250 Saint-Maur - France

*Paris Office*  
12 rue Lamartine  
75009 Paris - France

*International* +33(0)2 54 53 56 56  
*France* +33(0)2 54 53 56 54  
*roger-pradier.com* @rogerpradier

*export@roger-pradier.com*  
*advfrance@roger-pradier.com*